



InterFocus
Building Laboratory Solutions

InterFocus

Since 1988, InterFocus has set the bar for laboratory excellence across the UK. As leaders in turnkey refurbishment and bespoke laboratory furniture systems, our design-to-delivery methodology ensures that every project transforms complex requirements in to high-performance, flexible laboratory workspaces.

Our Accreditations & Certifications



nterFocus



Who we work with

Austin-Smith:Lord



UNIVERSITY OF
OXFORD



AkzoNobel

What our clients say



“Our laboratory is looking superb! Your team were all very professional and provided us with an excellent level of service.”

Colin Jesson | Laboratory Team lead
RTI International



“These units will serve to the enhance the professional appearance of our laboratory facility which is essential in the competitive world of Motor Sport.”

Tony Flower MCMI | Material Science Manager
Ricardo UK Ltd



“Just like to say we have been very impressed by your fitters, they have been so helpful and tidy it was a pleasure having them on site.”

Christine White | Director
Dick White



“InterFocus did an excellent job and all of our staff are extremely pleased with the end result.”

Graham Danks | Pathology Services Manager
New Cross Hospital NHS



“The entire project has run smoothly from start to finish and has been completed to the excellent standard you continually maintain.”

Richard Wood | Project Manager
Hallam Contracts

STANHOPE × Morgan Lovell

Stanhope identified increasing demand for specialist science and research space and partnered with Morgan Lovell to deliver a high-quality modular laboratory fit-out at White City Place. The development was transformed into four flexible research suites designed to attract leading scientific tenants.

InterFocus was appointed as the laboratory fit-out contractor following showroom visits that showcased the IFlexx modular benching system. Combined with modular service ceiling tiles integrating power and data, the system provides a highly adaptable laboratory environment that can easily evolve to meet changing research needs.



Location

London
White City Place



Purpose

Prospective
Fit-out



Project Value

£450K+



Product

IFlexx[®]
iStatic



Scan to read the full case study

Stanhope and Cadillac Fairview worked with Morgan Lovell to transform office space into labs and support the blooming life sciences cluster in White City.



IFlexx modular
benching and
service spines



Power and data module
for IFlexx modular
benching system



IFlexx ceiling
service delivery
tile and services
umbilical to
modular bench





Cavendish Laboratory

The Ray Dolby Centre at the University of Cambridge is a landmark research facility located at the heart of the Cambridge West Innovation District. Spanning over 33,000 square metres across four floors, this cutting-edge building houses advanced laboratories and collaborative spaces for more than 1,100 researchers and students.

InterFocus was honoured to be selected as the laboratory fit-out specialist for this prestigious and complex project. The University required a laboratory benching system that could support a wide range of research disciplines while offering flexibility, durability, and a future-proof design.

In response, we worked closely with the client and end users to develop a tailored solution based on the iFlexx Modular Laboratory Benching system, complemented by a range of bespoke laboratory furniture and specialist equipment enclosures.

The project was delivered in six carefully coordinated phases, ensuring seamless integration with the building's fit-out timeline and the evolving needs of the client.



Location
Cambridge



Purpose
Physics Research



Project Value
£1.3M+



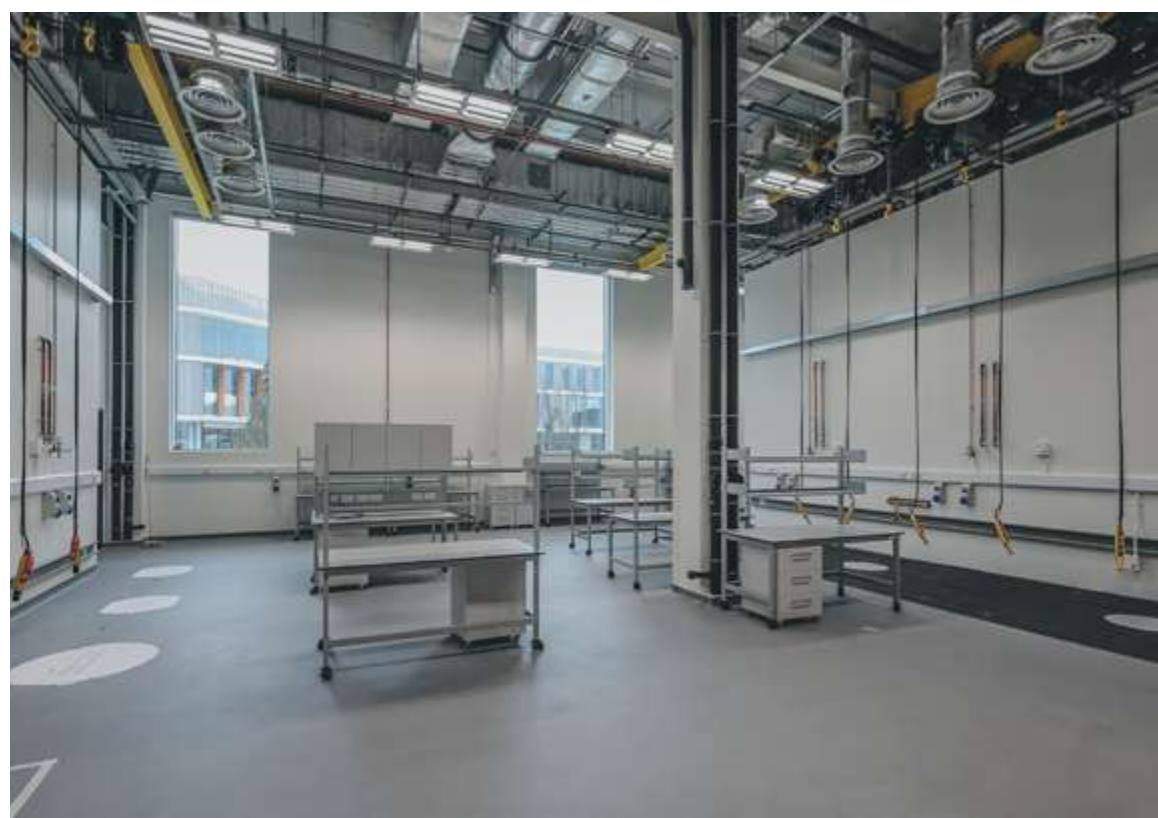
Program
36 Weeks



Scan to
read the full
case study

David Hunt
Building Manager | Ray Dolby

“InterFocus were the ideal partner for the Ray Dolby project. Their professional approach to design and installation ensured a smooth delivery, and the iFlexx flexible lab system was the perfect fit for our needs.”







IFlexx fixed and height adjustable teaching benches, primarily used for laser experiments

**iFlexx**[®]

The University of Cambridge required a laboratory benching system that could support a wide range of research disciplines while offering flexibility, durability, and a future-proof design. We worked closely with the client and end users to develop a tailored solution based on the IFlexx Modular Laboratory Benching system.



Bespoke ESD suites for Ray Dolby for their electronics development department. All of the lab and furniture was made using bespoke ESD laminate and earth bonded to special ESD earth within the building.

At the heart of the fit-out is the iFlexx system, specifically chosen for its modular design, the key feature that enables laboratories to adapt and evolve as research priorities change. The iFlexx system allows for straightforward reconfiguration of laboratory layouts, minimising disruption while maximising flexibility.



Cambridge Design Technology

This project transformed a previously vacant building into a fully operational, state-of-the-art scientific facility, delivered as a complete turnkey refurbishment solution. InterFocus managed the project from concept to completion, ensuring a smooth and high-quality delivery throughout.

Key works included the installation of a new purpose-built mezzanine floor to accommodate plant equipment and office space, along with a temperature-controlled server room designed to support critical data infrastructure. Bespoke cooling systems ensure a stable environment, maximising reliability and uptime.



Location

Cambridge



Purpose

Technology
Research and
Development



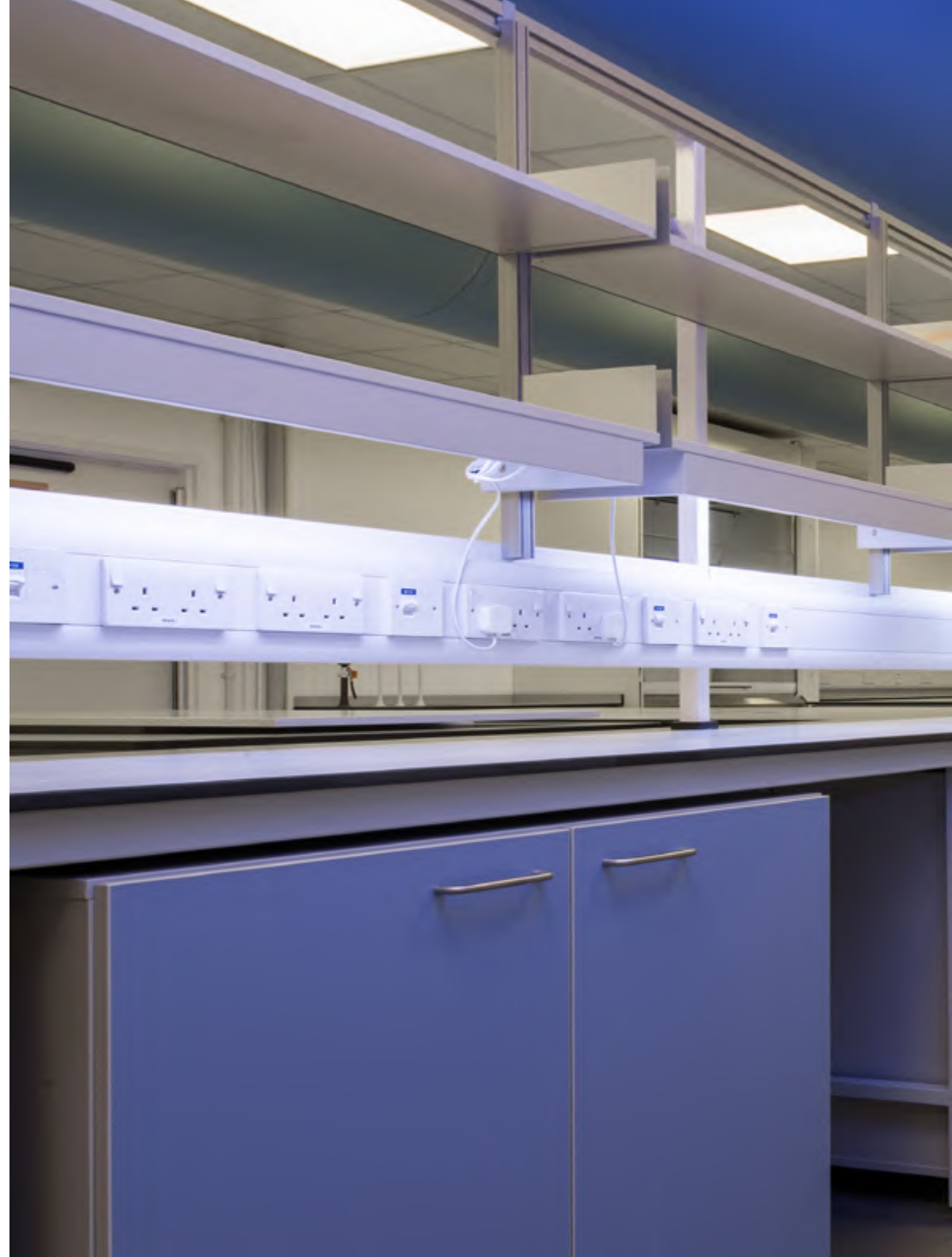
Project Value

£1.35M+



Program

30 Weeks





Scan to read the full case study

Full turnkey delivery of a technology research facility, incorporating a specialist M&E design package and bespoke laboratory furniture.



Bespoke air intakes and outlets were installed using sock baffles to gently diffuse airflow, ensuring experiments were not affected by air movement within the laboratory.



Bespoke LED frequency lighting installed providing daylight and special filtered lighting for lab area.

Bespoke blast panels designed and installed for new built chemical storage area, they provide automatic pressure release in the event of an explosion and this was linked with an automatic fire suppression system.





Delivery & Design of Complex M&E Solutions

A key element of the installation was the creation of a temperature controlled server room, specifically designed to support essential data infrastructure. This room is equipped with bespoke cooling systems to maintain a constant environment, ensuring maximum uptime and operational reliability.



To meet rigorous safety and compliance requirements, InterFocus also constructed a bespoke explosion-proof chemical store. This structure includes integrated blast panels designed to release explosive energy safely, helping to preserve the structural integrity of the main building.



InterFocus recently completed a significant turnkey laboratory installation for Welsh Water at their new head office in Newport. This major project involved converting a former call centre into a fully equipped, modern laboratory facility.

The complex refurbishment encompassed a full suite of services, including laboratory furniture manufacture, fume extraction systems, specialist gas supply, and environmental controls. Our team worked collaboratively with Welsh Water to deliver a high-specification facility tailored to the rigorous demands of water analysis and testing.

Our mission was to create a safe, compliant, and inspiring laboratory environment that supports Welsh Water's essential work in water quality testing as featured on BBC Wales. This project is a prime example of our capability to deliver custom laboratory solutions in the UK, combining technical innovation with practical design.



Location

South Wales



Purpose

Utilities Water Testing



Project Value

£1.2M+



Program

26 Weeks



Welsh Water flagship lab facility as featured on BBC TV, a tight time scale was required to achieve UKAS accreditation for new water testing facility.



Bespoke mobile equipment benches were produced for the sensitive analytical equipment.





A Complete Turnkey Solution

By overseeing every aspect of the build—from infrastructure to final fit-out—InterFocus ensured the entire process was seamless, efficient, and compliant with UK safety standards. The result is a workplace that not only supports critical scientific processes but also motivates staff through a clean, modern, and functional space.



Custom-Designed M&E Solution

A custom-designed M&E solution was provided for Welsh Water, including the installation of specialist gas systems and an on-site gas storage facility. The solution supports bulk gas delivery, ensuring continuous and efficient 24/7 site operation.



The University of Bedfordshire's £40 million STEM Building at the Luton campus represents a major investment in the future of STEM education. Designed to support both teaching and research across a broad range of STEM disciplines, the new four-storey facility spans 6,000 square metres and houses cutting-edge laboratories and teaching spaces.

The building enables the University to offer an expanded portfolio of science courses, including Nutrition, Pharmacy, Physics, Chemistry, Biochemistry, Mechanical Engineering, and Geology.

InterFocus delivered a full package of specialist furniture and fittings, including:

- Advanced computer laboratories for robotics, automotive engineering, and cyber security.
- Bespoke engineering workshops designed for practical, hands-on learning.
- Modern laboratory facilities supporting a range of scientific disciplines.



Location
Bedford



Purpose
STEM Learning



Project Value
£460K+



Program
28 Weeks





New build STEM center for University of Bedfordshire, working alongside Carter Construction.







The David Attenborough Building at the University of Cambridge exemplifies architectural heritage combined with modern sustainability. Originally the Arup Building, it was designed by RIBA Gold Medal-winning architect Sir Philip Dowson and completed in 1971, sparking architectural debate at the time. A comprehensive renovation has modernised the building to meet contemporary environmental and functional standards, preserving its legacy while supporting cutting-edge research and conservation.

The refurbishment of the David Attenborough Building aimed to modernise the facility while improving energy performance and reducing its carbon footprint. The project focused on:

- Upgrading energy efficiency with advanced systems and materials
- Using sustainable construction practices to minimise environmental impact
- Enhancing internal layouts to support collaborative research and academic excellence



Location
Cambridge



Purpose
Zoology
Research



Project Value
£250K+



Program
8 Weeks





Scan to
read the full
case study

Steve Wheeler
Project Manager | Kier

“Safety to Kier is paramount and your team have represented InterFocus very well.”







Flavouring Development and Testing

Chosen for our expertise and proven track record, we worked closely with the client to deliver a state-of-the-art laboratory tailored to their unique R&D needs.

Our team of laboratory design specialists engaged with the client to fully understand their operational and scientific requirements. The result was a fully bespoke laboratory featuring high-specification components throughout, including:

- Custom-designed tasting booths equipped with filtered LED lighting that can change colour – ideal for conducting blind taste tests in controlled conditions.
- A dedicated food tasting area, thoughtfully designed with ambient lighting and aesthetics inspired by modern cafés, promoting a comfortable and professional testing environment.



Location

Suffolk



Purpose

Food & Flavourings Development



Project Value

£400K+



Program

24 Weeks





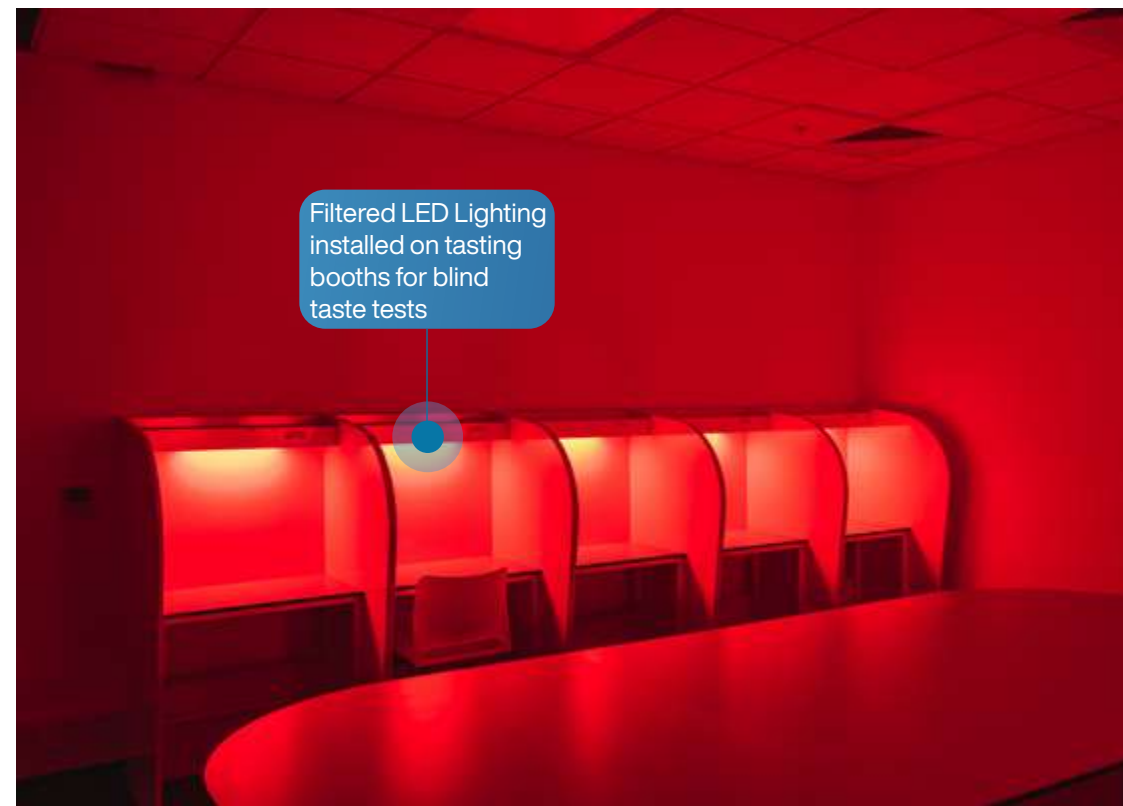
Scan to
read the full
case study

Marcus Cannon
Technical Director | InterFocus

“I enjoy building strong client relationships throughout the design and delivery journey. It’s rewarding to truly understand their requirements and work creatively through technical challenges to deliver a world-class laboratory that supports outstanding science and research.”



Bespoke stainless steel lab furniture



illumina

Feilden+Mawson x VINCI
CONSTRUCTION

illumina was founded in 1998 with a mission to transform human health. This project was a fit out for their newly acquired Cambridge headquarters located within Granta Park, Cambridge. Feilden & Mawson were the appointed architects and Vinci were appointed main contractor.

InterFocus was appointed as the laboratory fit-out contractor due to our expertise in BIM modelling and the advantage of operating a local manufacturing facility. Through a series of regular meetings with both the architect and the client, we developed a design that maximized laboratory capacity while aligning with the client's specific requirements.

The project encompassed three floors, each distinguished by a colour scheme derived from the client's logo. This approach not only reinforced brand identity but also provided a clear visual system for identifying floor levels and their corresponding laboratory areas.



Location

Cambridge
Granta Park



Purpose

Client New Build
Fit Out



Project Value

£1.35M+



Program

20 Weeks



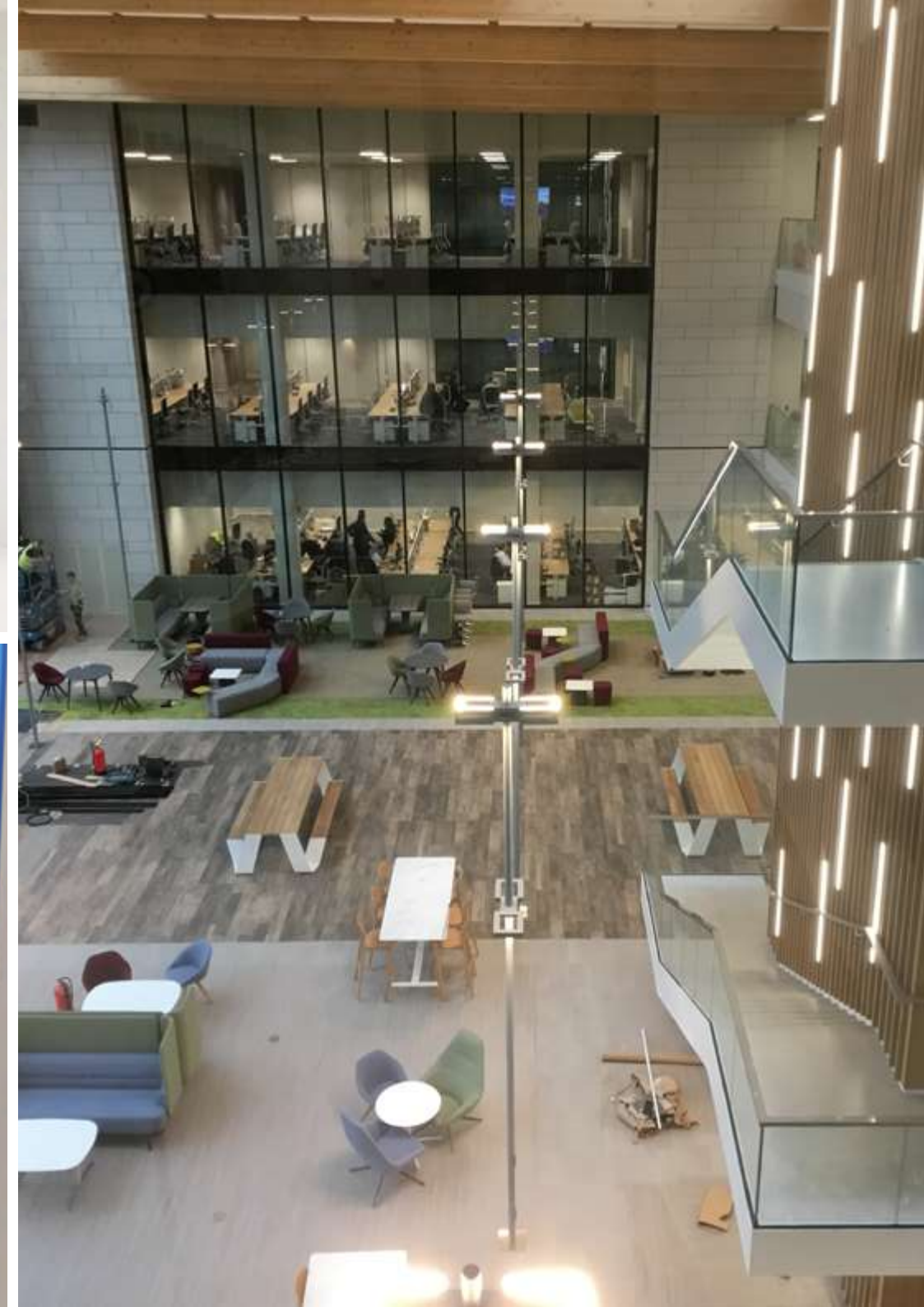
Alone - XP3



Scan to read the full case study

Illumina flagship lab facility at Granta Park, Cambridge.







InterFocus was commissioned by Chemetall, a prominent entity within BASF's Coatings division, to design and construct a state-of-the-art laboratory and office facility in Milton Keynes.

Chemetall specialises in applied surface treatments, providing solutions that protect metals from corrosion, facilitate forming and treatment, and ensure optimal coating adhesion across various industries, including automotive, aerospace, aluminium finishing, and metal forming.

The objective was to deliver a bespoke turnkey solution that met Chemetall's specific operational requirements. InterFocus managed the project from initial design through to final commissioning, ensuring a seamless integration of all components.



Location

Milton Keynes



Purpose

Turnkey Project



Project Value

£1.7M+



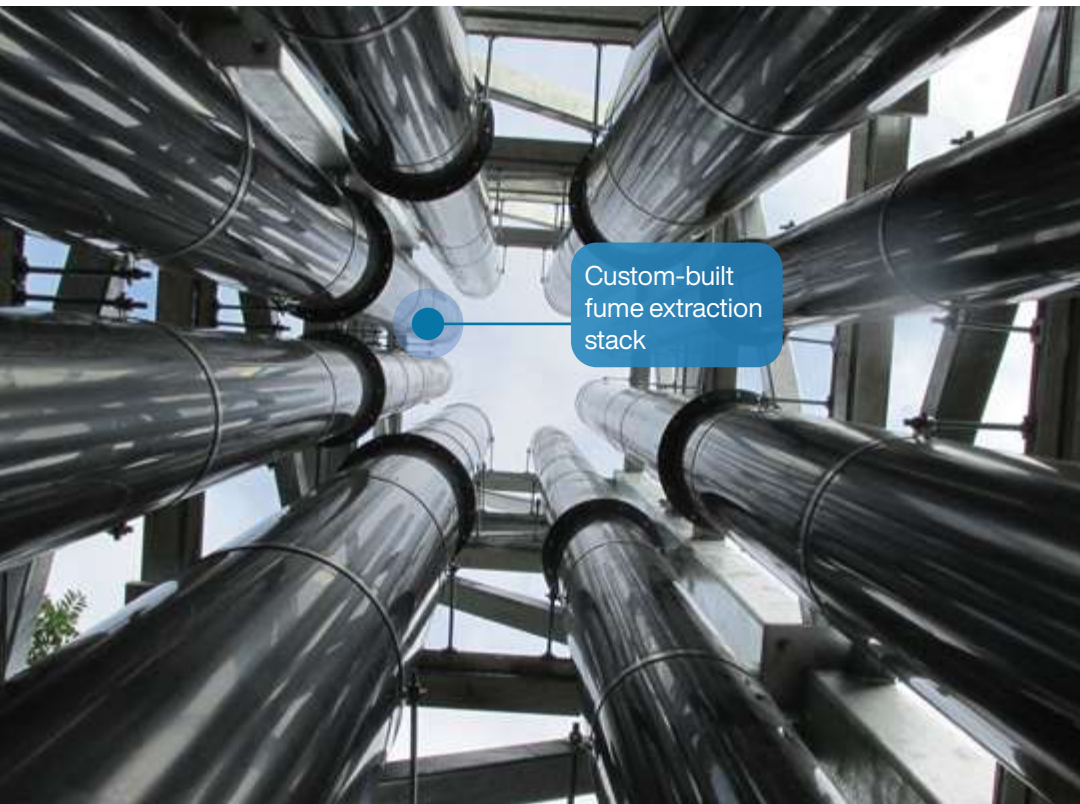
Program

25 Weeks



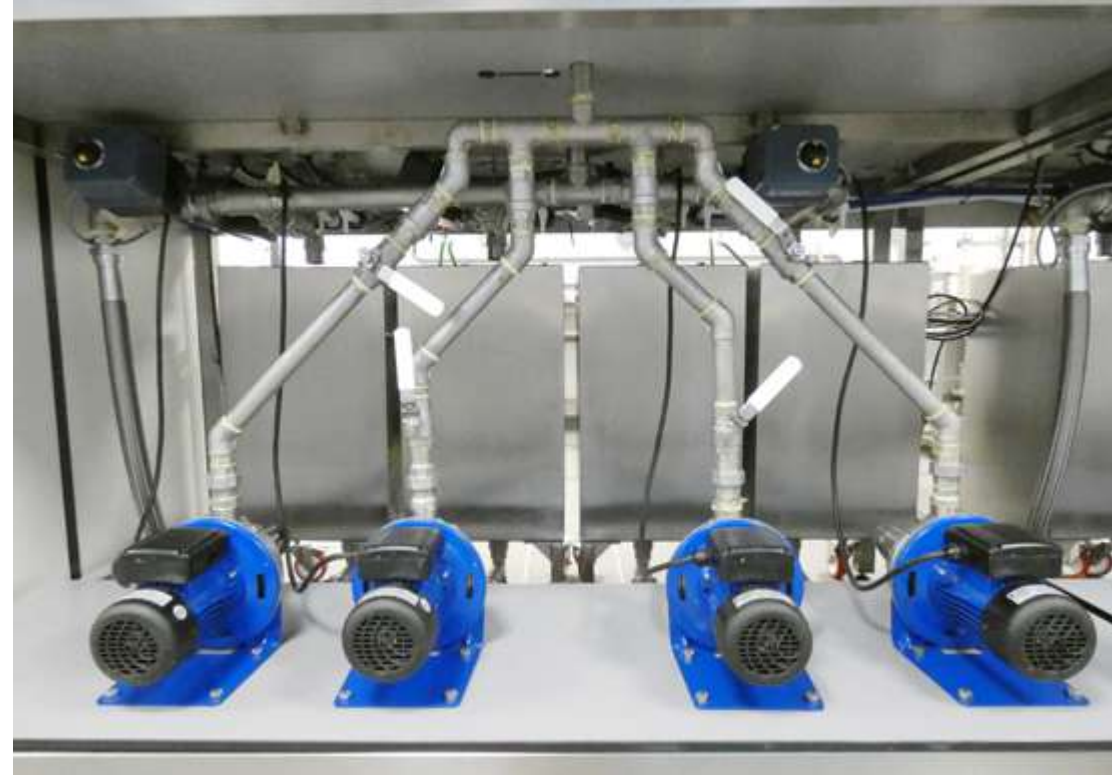
Scan to read the full case study

Full turnkey installation including M&E and new lab design for BASF/Chemetall in Milton Keynes.



Custom-built
fume extraction
stack





Bespoke stainless steel design for paint mixing and measuring system





A Complete Turnkey Solution

The project successfully delivered a fully operational laboratory and office facility in line with Chemetall's commitment to innovation and quality. The turnkey delivery model ensured operational efficiency, compliance with all relevant industry standards, and minimal disruption to ongoing business activities.



The project also incorporated bespoke staff kitchens throughout the building, complemented by vibrant, custom-designed breakout areas that support staff wellbeing, collaboration, and informal project discussions.

intertek

Total Quality. Assured.

Intertek, a global leader in Assurance, Testing, Inspection and Certification services, has supported businesses worldwide for over 130 years. Their commitment to Total Quality Assurance continues to evolve, with tailored solutions that extend beyond compliance to help clients improve performance, gain efficiency, and drive sustainable growth.

As part of their ongoing expansion in the UK, Intertek acquired an industrial facility in Royston and sought a complete transformation to house a new laboratory and office environment.

InterFocus undertook the complete design and build of the facility, transforming the site into a high-specification laboratory and office complex tailored precisely to Intertek's operational needs. The result was a cutting-edge facility designed for efficiency, compliance, and future growth – exceeding the client's expectations.



Location

Melbourn Royston



Purpose

Full Turnkey
Package



Project Value

£1M+



Program

30 Weeks





Before



After



Scan to read the full case study

Refurbishment project which also included comprehensive external works to transform the building into a modern facility.





Bicycle®

Bicycle Therapeutics, a pioneering biopharmaceutical company headquartered in Cambridge, UK, and Boston, USA, is at the forefront of next-generation therapeutics. Their innovative platform, based on groundbreaking research by Nobel Laureate Sir Greg Winter, has revolutionised the development of antibody-based treatments and bicyclic peptide (Bicycle®) drugs.

When Bicycle Therapeutics sought to relocate its primary UK operations to The Portway Building within Cambridge's life sciences hub, a tailored laboratory environment was essential.

InterFocus was appointed to deliver a turnkey laboratory solution designed to meet the client's precise scientific and operational requirements. The project had to be delivered within a demanding six-month timeframe.

InterFocus transformed the facility into a state-of-the-art research and development space. Our brief included the integration of advanced laboratory infrastructure while retaining and adapting much of the existing furniture to ensure cost effectiveness and environmental responsibility.



Location

Granta Park,
Cambridge



Purpose

Medical
Research



Project Value

£6M+



Program

26 Weeks





Bicycle



Scan to read the full case study

The Bicycle project involved custom-designing a new M&E system and laboratory facilities, followed by a full refurbishment of the building.







A Complex Fitout Completed On A Rapid Timescale

InterFocus successfully delivered a highly customised, fully functional laboratory facility tailored to the complex research requirements of Bicycle Therapeutics. Despite an ambitious programme, the project was completed on schedule and to a high standard, demonstrating our expertise in delivering complex scientific environments under time-critical conditions.



The solution incorporated specialist laboratory infrastructure, carefully coordinated services, and robust compliance with relevant regulatory and safety standards. Close collaboration with the client and stakeholders ensured the facility supports both current research needs and future flexibility, providing a high-quality environment that enables scientific innovation and operational efficiency.



South East Water appointed InterFocus to deliver a turnkey laboratory and office refurbishment at their newly acquired commercial premises – a former print works located on an industrial estate. The objective was to transform the building into a high-spec UKAS-accredited analytical testing facility that supports their mission to deliver clean, safe drinking water to over 2.1 million people across the South East.

InterFocus was tasked with the full design and build, including analytical laboratories, administration offices, and associated plant infrastructure. The upgraded Orion site now operates 24/7, 365 days a year, ensuring round-the-clock testing of water samples from across the region.



Location
Farnham



Purpose
Water Testing



Project Value
£3.5M+



Program
38 Weeks





Scan to
read the full
case study

South East Water's flagship water testing facility required a fast-track project timeline to meet the board's deadline for UKAS accreditation.







InterFocus

01223 894833

sales@interfocus.co.uk

mynewlab.com

Cambridge | Gatwick | Aberdeen | Cardiff | Manchester